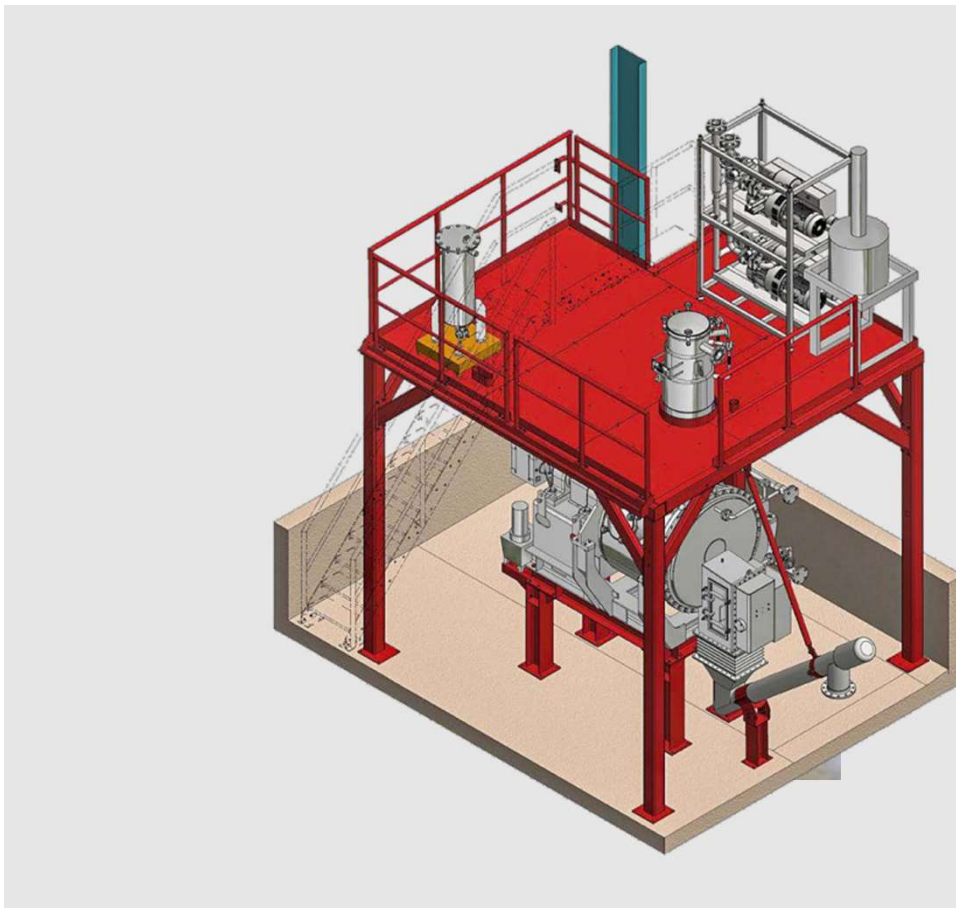


MSU MERCURY STABILIZATION UNIT

Preparing Mercury for safe final disposal



GENERAL INTRODUCTION

ZETTL Mercury Stabilization Unit (MSU) stabilizes and transforms liquid Mercury into HgS to make sure that extracted Mercury is not hazardously re-introduced into nature.

MSU 1800 is designed for 24/7 operation and is an automatically fed unit performing an automated rotating process under vacuum conditions. It is based on a well tested and safe batch process technology and has a capacity of 3 batches per day with up to 600 kg per batch. The entire process is performed in a closed system and approved according to the highest safety standards.

ZETTL Mercury Recovery concept chain makes it possible to avoid toxic mercury from products in our daily life to end up in the general flow of waste. Each part of our concept creates conditions to protect the greater environment and our food sources from Mercury contamination. ZETTL is thus an important part of the value chain in creating life of quality or quality of life.



TECHNICAL DATA

Model:	MSU 1800
Capacity:	Up to 1.800 kg/24 hrs
Power input:	45 kW
Length / Width / Height:	4.000 mm / 5.000 mm / appr. 4.500 mm
Operating temperature range:	+10 °C to +35 °C

