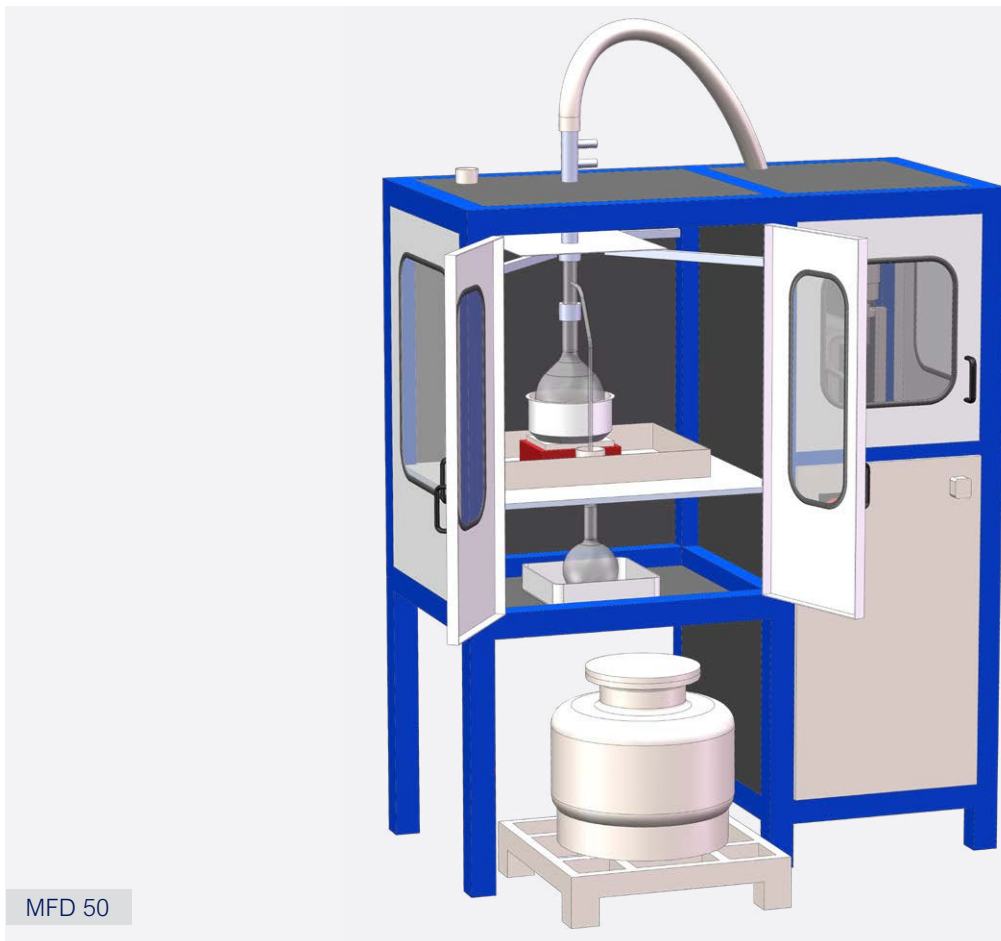


# MFD – MERCURY FINE DISTILLER

99,9999 % purity of Mercury guaranteed.



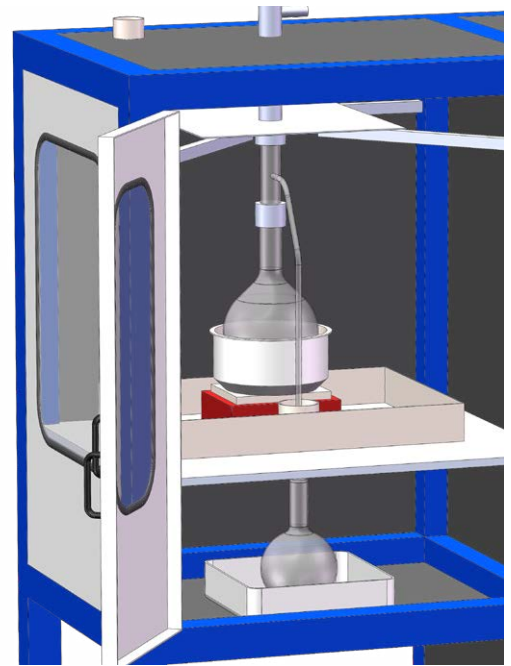
MFD 50

## GENERAL INTRODUCTION

ZETTL Mercury Fine Distiller (MFD) is for users demanding the highest grade of Mercury from their distillation. The MFD 50 is designed for 24/7 operation and the last step after the BPD or RPD. The equipment can refine to near Virgin Mercury quality up to grade 99,9999% of purity, which can be used in industrial processes and for scientific purposes.

The Fine Distillation process is carried out in three steps. First the Oxygen phase, where impurities are removed from the Mercury during a 3 to 14-day treatment. Then the Nitrogen phase to ensure all Oxygen is removed from the Mercury which lasts approximately for one week. And finally, the actual distilling in the MFD 50 is carried out.

ZETTL Mercury Recovery concept chain makes it possible to avoid toxic Mercury from products in our daily life to end up in the general flow of waste. Each part of our concept creates conditions to protect the greater environment and our food sources from Mercury contamination. ZETTL is thus an important part of the value chain in creating life of quality or quality of life.



### TECHNICAL SPECIFICATIONS MERCURY FINE DISTILLER (MFD 50)

**Capacity:**

..... up to 50 kg/24 hrs

**Media:**

Electrical connection: ..... 220 V, 50 Hz, 3-core cable, max. 10 kW

Oxygen: ..... 1 m<sup>3</sup> per batch.

Nitrogen: ..... 1 m<sup>3</sup> per batch.

Specification for connection for both Oxygen and Nitrogen: Connection pipe 6 mm hose nipple or ¼ inch thread.

**Dimensions (2nd step, Appr. the same for 1st step)**

Length: ..... 1.200 mm

Width: ..... 2.500 mm

Height: ..... 1.000 mm

**Operational temperature range:**

.....+10 °C – +35 °C

**Exhaust:**

Exhaust duct: ..... Ø 125 mm

**Hg purity after distillation:**

Hg purity: ..... 99,9999 %

### PURCHASE SPECIFICATIONS AND ADDITIONAL OPTIONS

**The purchase will include the following components:**

2 pc BLEFA containers (80 l.)

**Options:**

Active carbon

Cooling unit

**ZETTL**

Bodenseestraße 29, 81241 Munich

+49 89 8 18 09 - 0 | info@zettl-munich.de

zettl-munich.de

Please visit our web site [zettl-munich.de](http://zettl-munich.de) for more information

